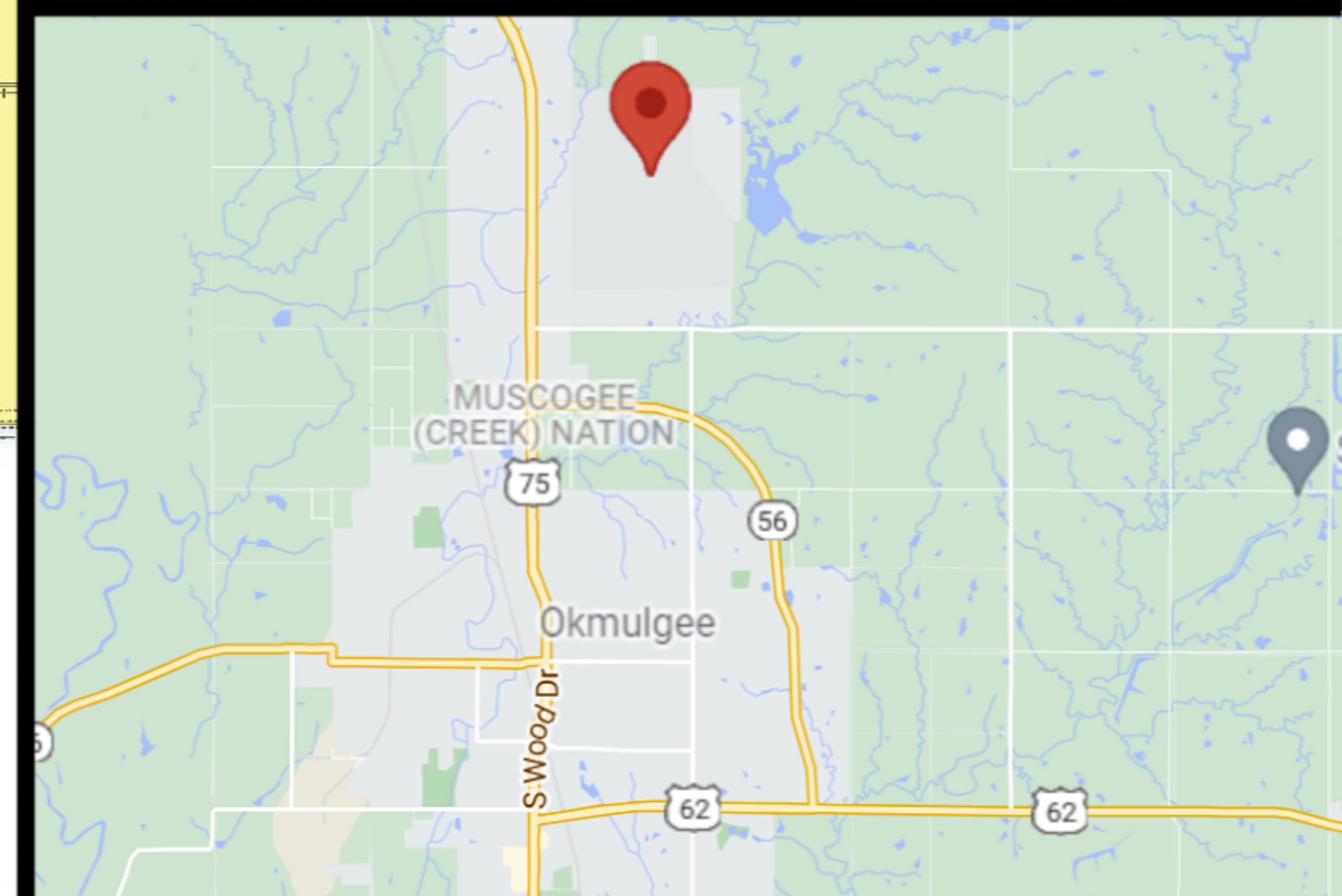
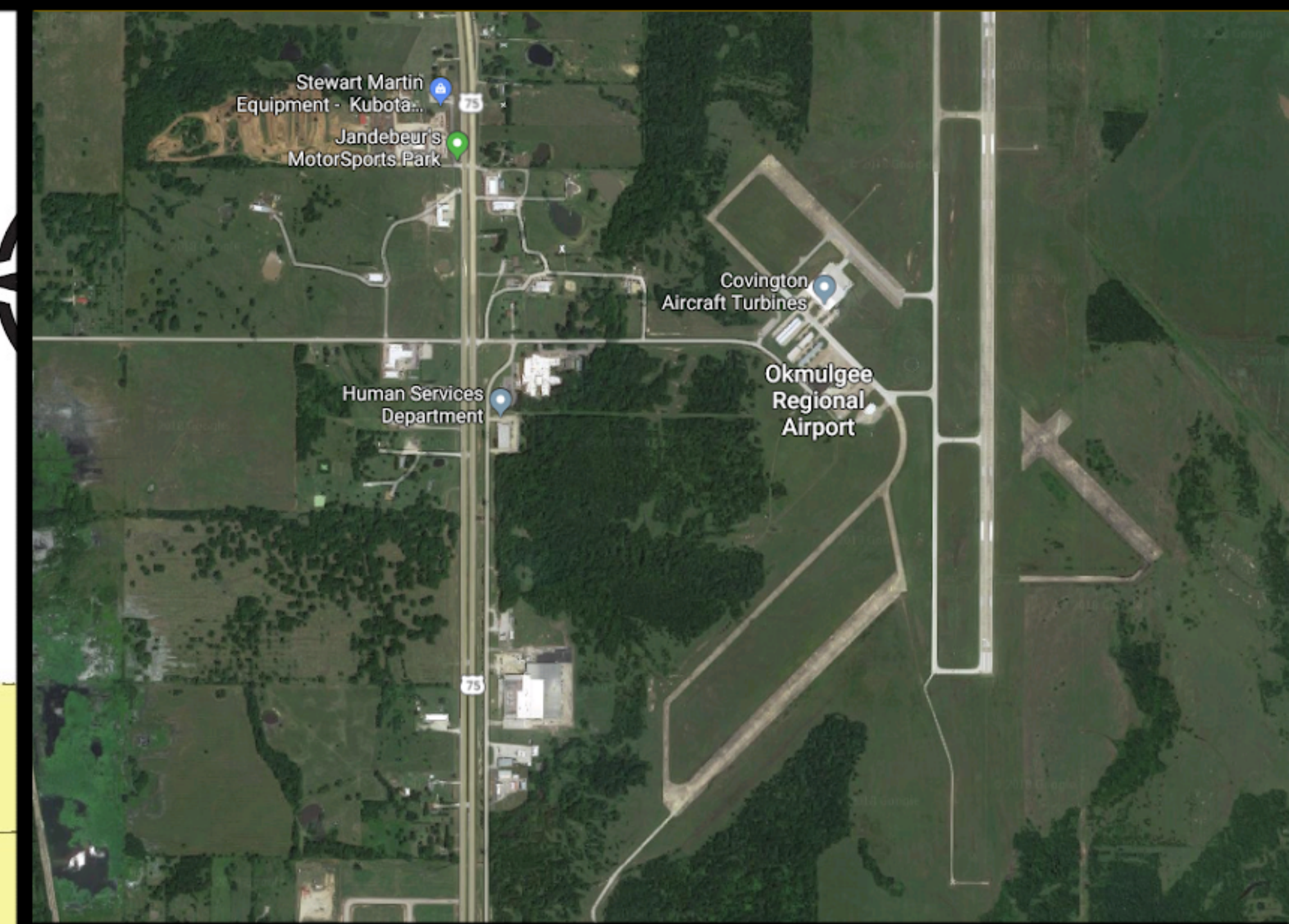
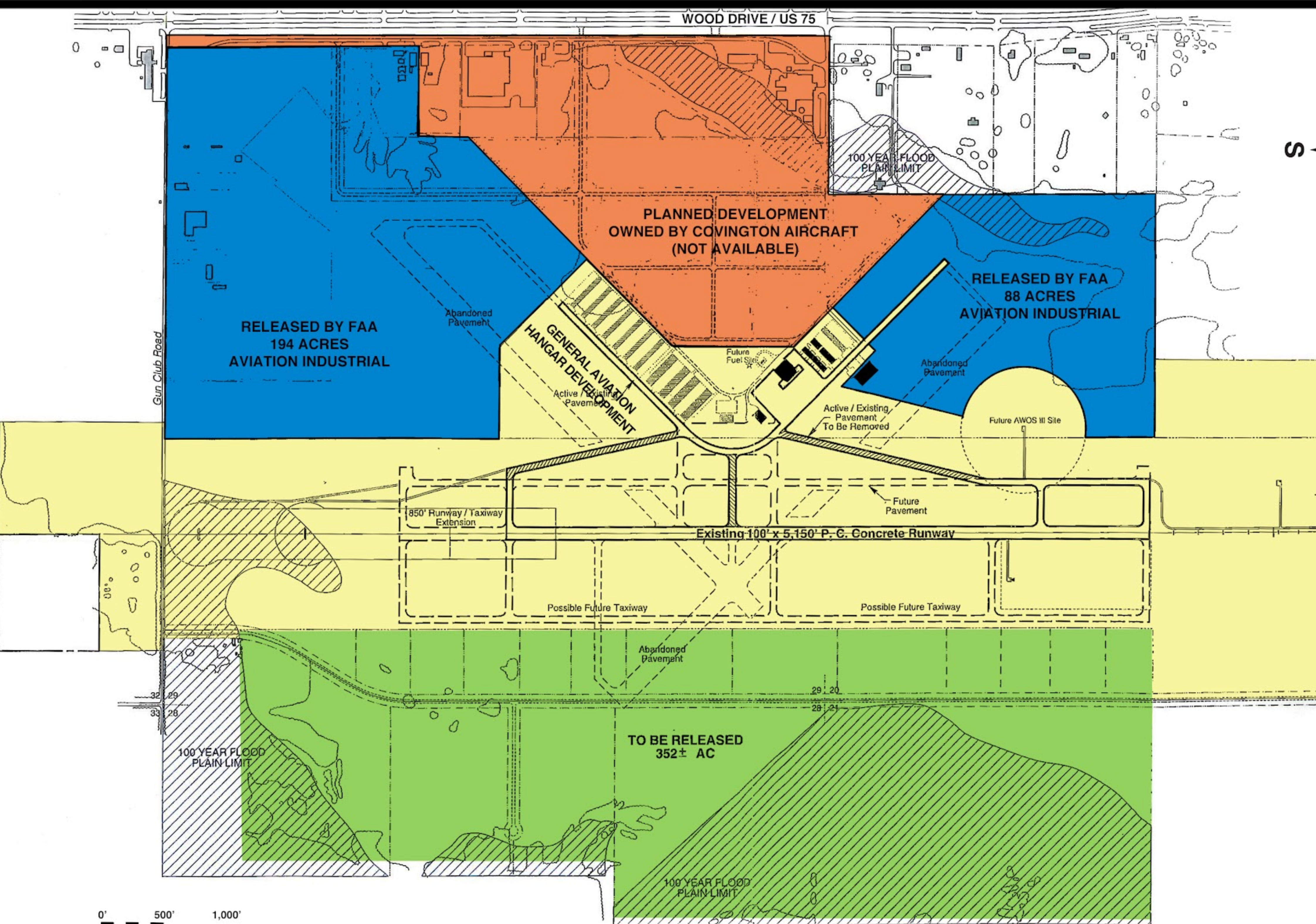


# INDUSTRIAL PARKS AVAILABLE

OKMULGEE REGIONAL AIRPORT

100 W Airport Road  
35.6680985, -95.9487



## FEATURES

### LOCATION

Located just north of Okmulgee, just off US Highway 75 (divided 4 lane) and is owned by the City of Okmulgee. Zoned Aviation Commercial. Currently 88+ acres released by the FAA for immediate development for aviation related firms. Co-developed by Covington Aircraft, City of Okmulgee, and OADC. Covington Aircraft is bringing their world headquarters on adjoining property.

### FEDERAL/STATE INCENTIVE ZONES

TIF District 1  
Federal Opportunity Zone  
Enterprise Zone  
New Market Tax Credits (pending allocation designation)

### UTILITIES

Municipal utilities will be provided

### PROXIMITY TO MARKET

Okmulgee is located on US Highway 75 just 32 miles south of Tulsa and offers proximity to three major interstate highways.

I-44	35 miles north
I-40	14 miles south
I-35	100 miles east at "America's Crossroads" where the three routes intersect

NOTE: The basic map is for general knowledge of the project area. It is not to scale and cannot be used to calculate the dimensions. Official construction drawings are available.