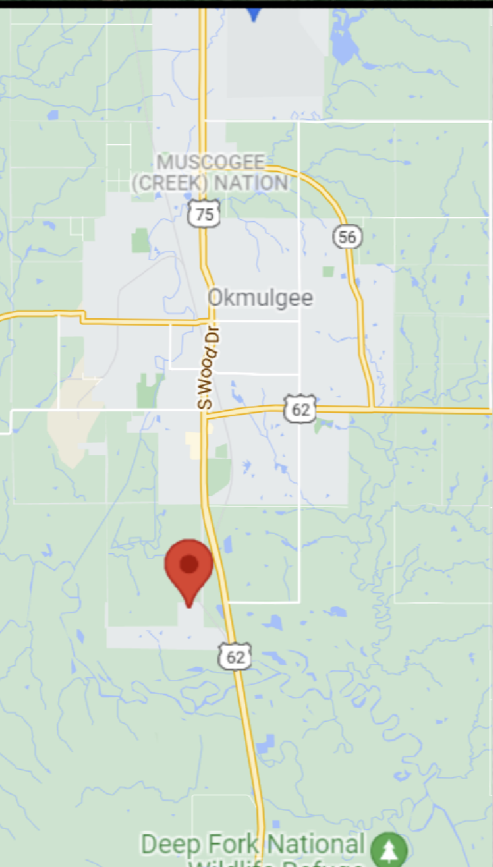
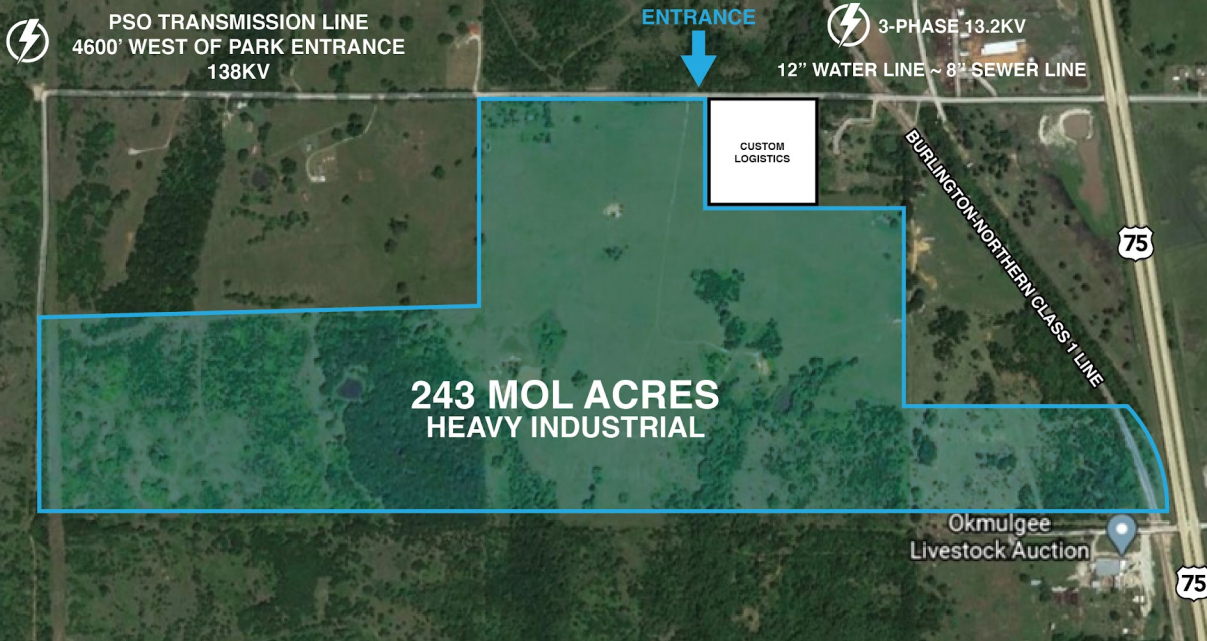


# INDUSTRIAL PARKS AVAILABLE

## SOUTH INDUSTRIAL PARK

12840 Banyan Road  
35.580857, -95.964496



## FEATURES

### LOCATION

Approximately 243 acres (MOL) located in and owned by Okmulgee County

### RAIL

BNSF rail borders the property, however, there is no existing spur or siding.

### PROXIMITY TO MARKET

Okmulgee is located on US Highway 75 just 32 miles south of Tulsa and offers proximity to three major interstate highways.

- I-44 35 miles north
- I-40 14 miles south
- I-35 100 miles east at "America's Crossroads" where the three routes intersect

### UTILITIES

- 12" Water Line
- 8" Sewer
- Natural Gas
- 13.2kV Electricity

### FEDERAL/STATE INCENTIVE ZONES

- Enterprise Zone
- New Market Tax Credits (pending allocation designation)

NOTE: The basic map is for general knowledge of the project area. It is not to scale and cannot be used to calculate the dimensions. Official construction drawings are available.



Court Newkirk, Executive Director, [court@chooseokmulgee.com](mailto:court@chooseokmulgee.com)  
Deb Marshall, Assistant Executive Director, [deb@chooseokmulgee.com](mailto:deb@chooseokmulgee.com)  
918-938-0970  
[www.chooseokmulgee.com](http://www.chooseokmulgee.com)